



Made in  
England

# Ultrasound and Medical Couches

[www.knightimaging.co.uk](http://www.knightimaging.co.uk)



**Knight  
Imaging**

EXPERIENCE & EXPERTISE

## Ultrasound Couches

Autotilt Delta 2 ..... 3

## Cardiology Couches

Autotilt Echo ..... 4

## Vascular Couches

Autotilt Doppler STD ..... 5

## Medical Couches

Revolution21 Deluxe 3 Section Couch ..... 6

Bariatric Couches ..... 6

## X-ray Tables

Power Flex 1 and Power Flex Duo ..... 7

C-Arm Table ..... 7

Scarfell MRI Trolley ..... 7

## Critical Care Chair

Autotilt Kimac ..... 8

## Mammography Chair

Cardiff Chair ..... 9

## Operator Seating

Operators Chairs and Stools ..... 10 - 11

## Patient Positioning

FOR-MED Arm, Head and Grip Support ..... 12

FOR-MED Neck/Thyroid Support ..... 13

FOR-MED Knee Support ..... 13

FOR-MED Foot Support ..... 13

FOR-MED Head Rest Front Foam ..... 14

FOR-MED Hand Support 'Superman Position' ..... 14

Trans Pad ..... 14

FOR-MED Breast Support ..... 14

Knee Trough Kit ..... 15

Gynaecological Stirrups Kit ..... 15

## Autotilt Delta 2

The Delta 2 is our top of the range ultrasound couch. For optimum ease of patient positioning, this flexible couch features four motors to control height, backrest and foot section adjustment as well as Trendelenburg tilting.

The twin sub-frame design provides excellent stability, whilst maintaining a compact footprint. The couch is available in a choice of upholstery widths up to 80 cm to safely and comfortably accommodate the larger patient.

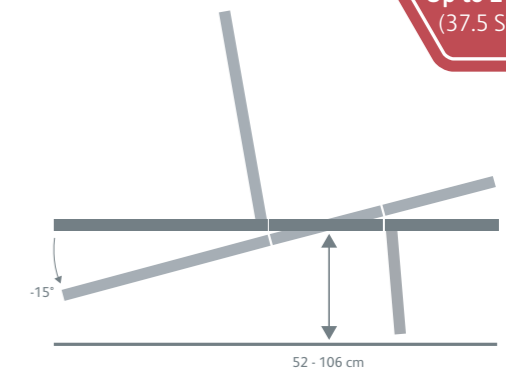
- Safe working load and lifting capacity of 240 kg.
- Motorised height, backrest, foot section adjustment and Trendelenburg tilting.
- Two upholstery widths available: Regular 70 cm or Extra Wide 80 cm.
- Low level access height for disabled or wheelchair patients – 52 cm.
- Twin sub-frames for extra stability.
- Paper roll holder supplied as standard.
- Optional leg or knee support kits available.
- Available in a choice of upholstery colours.



Autotilt Delta 2 Couch  
Order Code: M7A-IXX-01\*

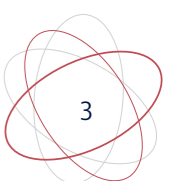
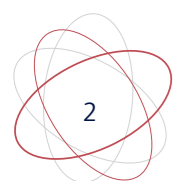


**PATIENT WEIGHT**  
Up to 240 kgs  
(37.5 Stone)



Dimensions	
Weight Capacity	240 kgs / 37.5 Stone
Height Range	52 - 106 cm
Overall Length	180 cm
Width*	Regular: 70 cm. Extra Wide: 80 cm
Please refer to the Technical Specification Sheet for further information	

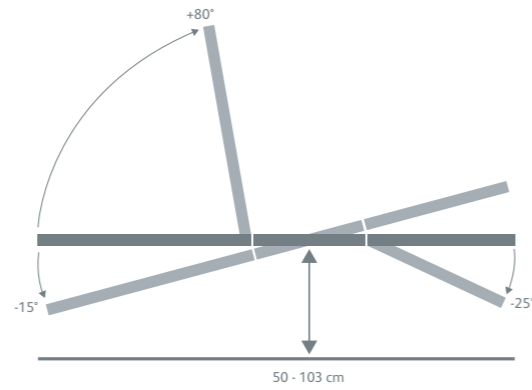
\*Default width is 70 cm. For bariatric patients the Extra Wide 80 cm option is recommended. Product code must be suffixed with desired width of couch: 70 or 80.



## Autotilt Echo

This specialist couch for Echocardiography allows the operator the flexibility of being able to carry out the patient examination from either side of the couch.

The ease of movement and patient positioning, alongside a maximum patient weight capacity of 240 kgs / 37.5 stone offers the ideal specification to meet your clinical needs.



Operator seat included

Autotilt Echo Couch  
Order Code: M7A-IXX-03

**PATIENT WEIGHT**  
Up to 240 kgs  
(37.5 Stone)



Dimensions	
Weight Capacity	240 kgs / 37.5 Stone
Height Range	50 - 103 cm
Overall Length	205 cm
Overall Width	80 cm
Please refer to the Technical Specification Sheet for further information	

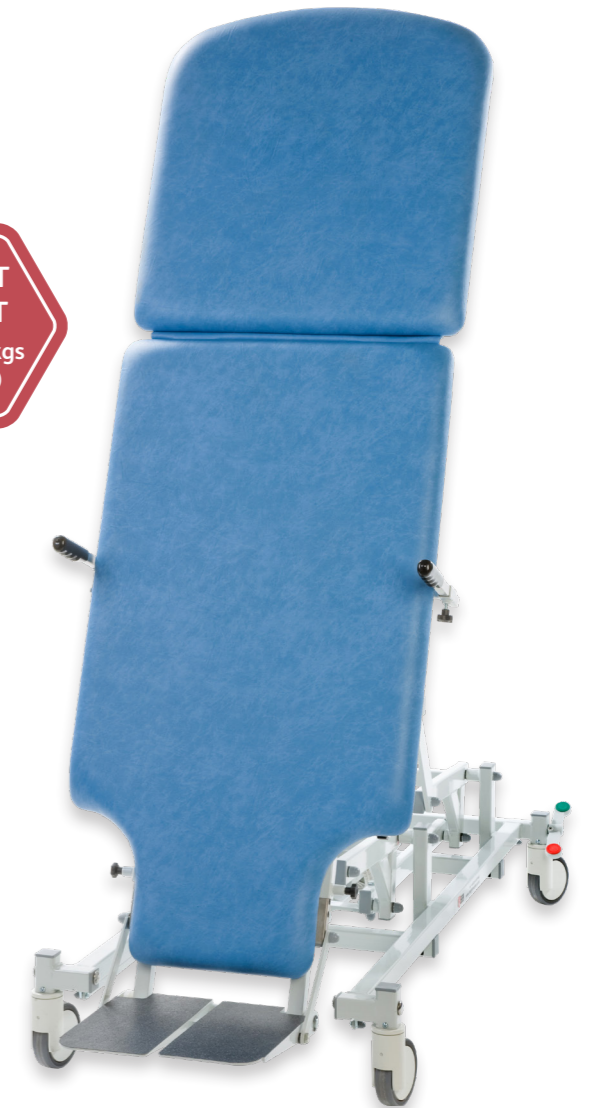
- Motorised height, backrest adjustment and Trendelenburg tilting.
- Foot section is manually adjusted and incorporates anti-trap gas strut.
- Backrest design facilitates access and clearance for the transducer.
- Integral footrest for clinician when traditional right hand scanning, together with specially designed stool.
- Patient handgrip and security side support with detachable upholstery.
- Large castor wheels for ease of movement with central locking feature.
- High quality upholstery for durability with anti-bacterial specification.
- Supplied with paper roll holder and head support cushion.
- Available in a choice of upholstery colours.

## Autotilt Doppler STD

The Autotilt Doppler STD has been designed to meet the requirements of a wide range of applications for rehabilitation, assessment and examination procedures. This model comes with hand grips, patient worktable and a harness set, with central locking castors.

- Safe working load and lifting capacity of 225 kg.
- Large mobile wheel design, with central locking and steering facility.
- Electric height and tilting operation with hand switch as standard.
- Electric upper section tilt feature.
- Adjustable angle dual foot boards +15° to -30° (4 Positions).
- Height range of 47 cm to 101 cm.
- Tilting angle from 0° to +90°
- Lowers to wheelchair height for ease of patient transfer.
- Purpose made precision bearings on all pivot points.
- Clearance beneath frame for mobile hoist.
- Supplied with patient handgrips and set of harnesses.
- Patient worktable supplied as standard.
- Available in a choice of upholstery colours.

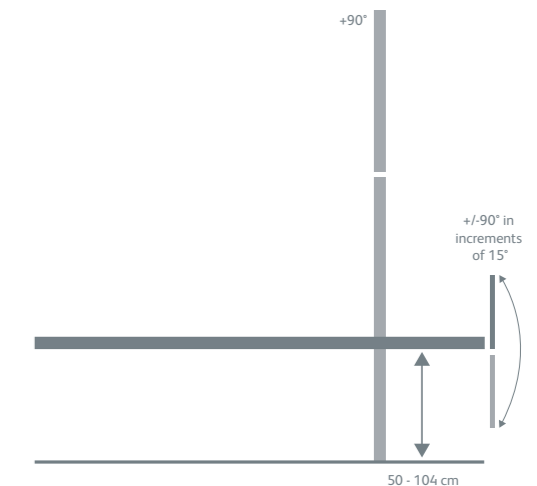
**PATIENT WEIGHT**  
Up to 225 kgs  
(35 Stone)



Autotilt Doppler STD Couch  
Order Code: M7A-IXX-04



Dimensions	
Weight Capacity	225 kgs / 35 Stone
Height Range	50 - 104 cm (Horizontal) 6 - 44 cm (Vertical Foot Plate)
Overall Length	205 cm
Overall Width	70 cm
Please refer to the Technical Specification Sheet for further information	



## Bariatric Couches

A range of 2 and 3 section couches specially designed to meet the needs of bariatric patients.

The ease of movement and patient positioning, alongside a maximum patient weight capacity of 325 kgs / 51 stone offers the ideal specification to meet your bariatric clinical needs.

- Safe working load and lifting capacity (from minimum height) of 325 kgs / 51 stone.
- Adjustable angle electric backrest operation from horizontal to +80°
- Adjustable angle head/foot section from -25 to +75°
- Adjustable sections incorporate anti-trap design gas strut.
- Electric height elevation from 43 - 97 cm.
- Available with retractable wheel design and adjustable foot for stability on uneven surfaces.
- Purpose made precision bearings on all pivot points.
- Clearance beneath frame for mobile hoist.
- Standard width 85 cm.
- Available in a choice of upholstery colours.



## Revolution21 Deluxe 3 Section Couch

The Revolution21 Standard 3 section couch is very versatile for a wide range of patient examinations and minor treatment procedures.

- Safe Working Load of 265 kg / 583 lbs.
- Electric height elevation from 46 to 95 cm in only 15 seconds.
- Electric backrest.
- Retractable, Independently locking or Central locking castors.
- 70 cm width Easy Clean Upholstery.
- Clearance beneath frame for mobile hoist access.
- Choice of upholstery colours.



## Power Flex 1 and Power Flex Duo

The Power Flex 1 (with electric height adjustment) and Power Flex Duo (with electric height and tilt adjustments) have been specially developed for X-ray applications.

In addition to the electric height adjustment, these X-ray tables are also available with an electric tilt adjustment (Trendelenburg / Reverse Trendelenburg positions).

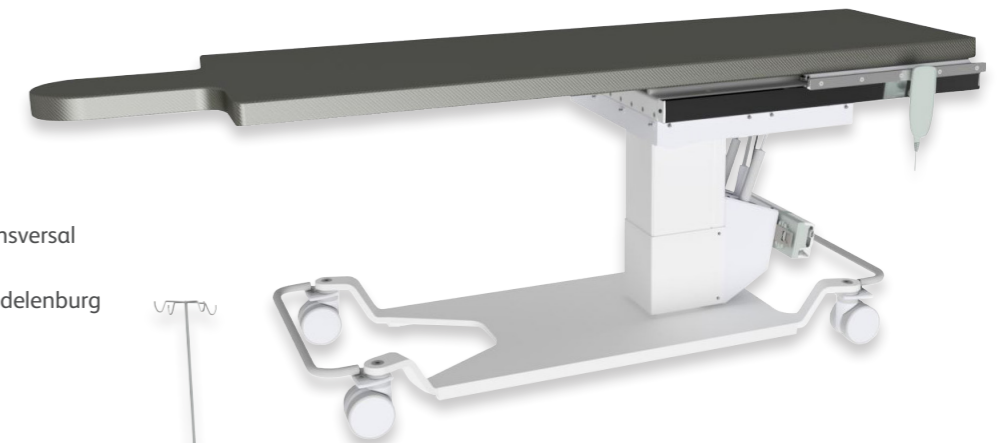
- The table surface (radiolucent plate) has a thickness of 15 mm (for table width 650 mm) or 25 mm (for table width 800 mm).
- Equipped with levelling feet under the leg frame for an enhanced level of stability.
- Controlled via a transformer and a hand switch the lifting columns provide smooth and quiet operation.
- The absence of a longitudinal brace at the front of the leg frame allows access for a C-arm X-ray unit.



## C-ARM Table

A bespoke range of tables, available with up to 5 ranges of movement.

- Battery powered – no trailing wires.
- Battery driven motorised programmable working height from 70 cm to 100 cm.
- 56 cm x 160 cm carbon fibre X-ray transparent table with head profile.
- Wheels with electrical lock.
- Extra battery with wall charger.



## Optional Fittings

- Battery driven motorised 20 cm transversal and 40 cm longitudinal movement.
- Battery driven motorised ± 15° Trendelenburg and ± 15° transversal tilting.
- Joystick panel for precise control of tabletop movements.

## Scarfell MRI Trolley

The Scarfell MRI trolley allows for transferring patients to the MRI scanner and to lift the trolley tabletop, including the patient, up onto the MRI scanner table, with entrance from the end.

- 230 (L) x 95 (H) x 60/95 (W) cm
- 200 x 56 cm fibre tabletop. Fully portable transfer board.
- Hydraulic adjusted working height from 65 to 95 cm.
- 150 mm wheels with triple-function foot brake, total lock, free and direction lock. All wheels can be controlled from one side.



### Autotilt Kimac

The Autotilt Kimac is Knight Imaging's latest addition to its range of patient chairs. This range has been purpose built with intensive care units in mind; a lack of wires reduces the patient and staff trip risk.

Designed to meet patient needs in Critical Care units, the Autotilt Kimac is ideal for enabling staff to move a patient out of bed at the earliest opportunity to aid recovery.

Highly manoeuvrable, the Kimac offers a low seating position and provides motorised powered positioning features, Trendelenburg tilting, and is PAT slide and hoist compatible.

Powered controls provide easier movement and optimum patient positioning.

- Height adjustable.
- Weight rated with the heavier patient in mind.
- Adjustable independent leg sections.
- Adjustable arm rests.
- Particularly low seating position.
- Compliant with standard cleaning requirements.
- Available in a range of upholstery colours.



### Cardiff Chair

The Cardiff Chair is a fully adjustable chair for breast imaging, mammography and stereotactic procedures.

Designed to assist with imaging less mobile patients, it is battery powered with motorised height adjustment and features a manual quick release in case of an emergency, as well as to assist patient recovery.

- Fully adjustable rear side sections and armrests.
- Adjustable angle backrest from -5° to +90°
- Manually adjustable foot section with height adjustable footplate.
- Interchangeable headrest.
- 10 cm thick comfort foam.
- Anti-bacterial upholstery and paintwork.
- Castors can be set to steer front or rear, free movement, or locked in lateral pairs.
- Available in a range of upholstery colours.

#### Basic Specifications

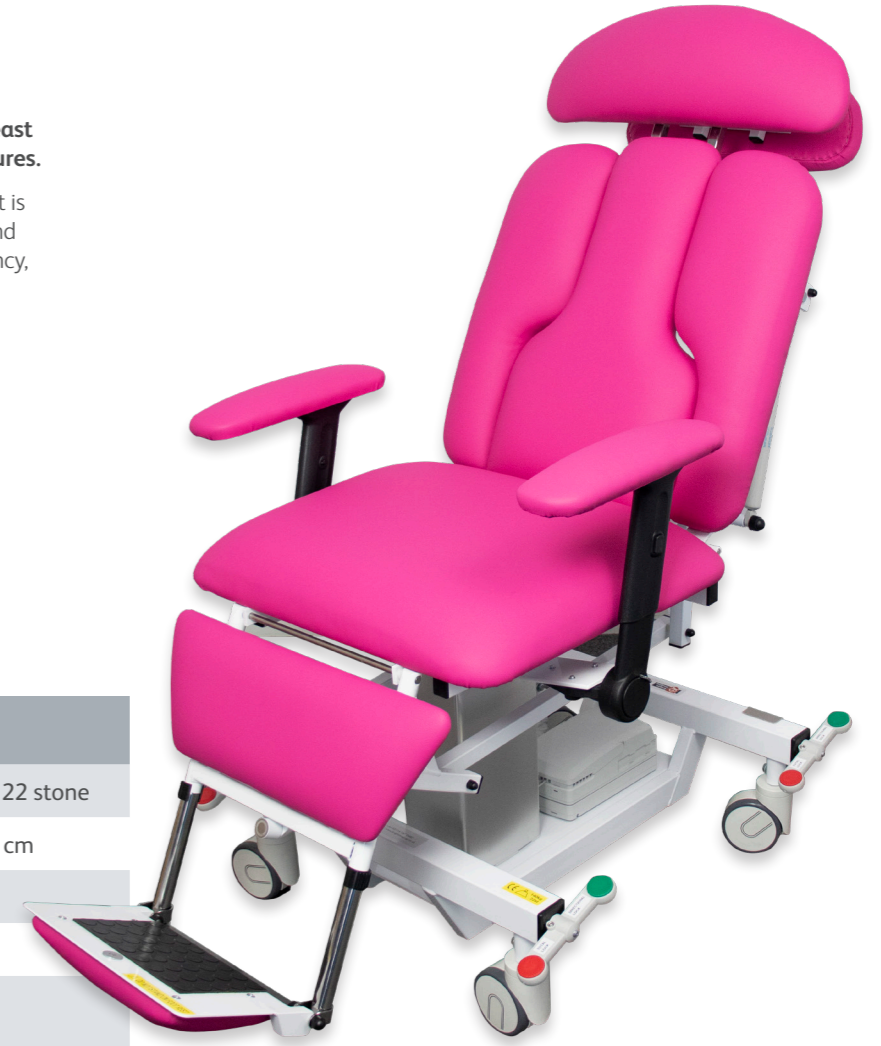
Maximum Patient Weight Capacity 140 kg / 22 stone

Height Range 60 - 100 cm

Seat Width 65 cm

Seat Depth

Please refer to the Technical Specification Sheet for further information



## Operators Chairs and Stools

A operators chair, which is ergonomically designed, has a sufficiently firm and dense cushion, and which provides plenty of support, will go a long way to helping the user maintain a healthy sitting posture. This not only alleviates pain in the neck and back, but can also improve concentration by reducing fatigue and thus free the mind to focus on other more important tasks.

Knight Imaging offer a range of operators chairs and stools designed to complement our extensive range of medical couches and which provide the required level of comfort and support for the user. Produced specifically for medical use, they are constructed of easy-to-clean components to aid infection control.

To view the complete range please visit our website at [www.knightimaging.co.uk](http://www.knightimaging.co.uk)



**Multi Procedure Chair**  
Order Code: K-DM-FB-1



**Contoured Medical Chair**  
Order Code: K-DM-FB-2



**Scanning Chair**  
Order Code: M7A-NXX-17



**General Medical Chair**  
Order Code: K-DM-FB-3



**Standard Operators Stool**  
Order Code: M7A-NXX-07



**Deluxe Saddle Seat**  
Order Code: M7A-NXX-11

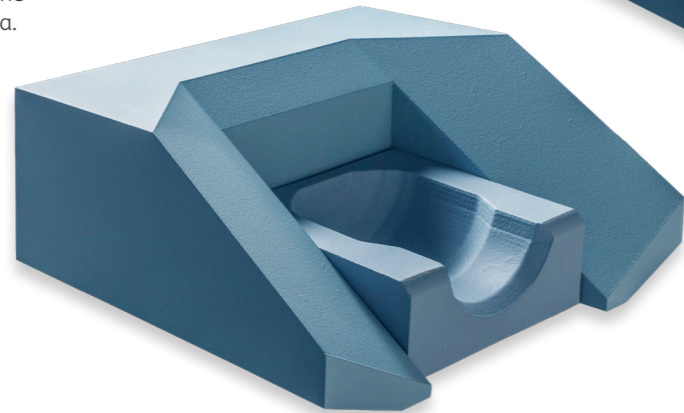
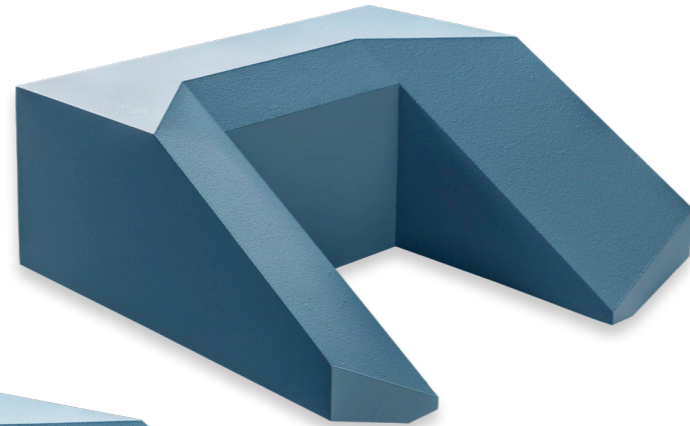


**Standard Operators Chair**  
Order Code: M7A-NXX-02

## FOR-MED Arm, Head and Grip Support

The FOR-MED arm, head, and grip support is specifically designed for patient comfort and optimal positioning during medical procedures, while maintaining proper alignment and preventing collision between the equipment involved and the patient.

- Head is fixed in a supine position during scans.
- A hand grip can be used to cross the hands for steady positioning.
- Keeps the patient within the equipment's scanning area.



## FOR-MED Neck/Thyroid Support

The FOR-MED neck support is used to stabilise and fix the head into position so that when scanning the same viewing angles are given.

- Special foam used for the head support provides extra comfort for the patient, and supports the neck.
- For thyroid scanning, the chin can be tilted backwards for an optimal projection of the thyroid.



## FOR-MED Knee Support

Designed for comfortable patient positioning during medical procedures, whilst maintaining proper alignment, the FOR-MED knee angle provides better support to patients when they are positioned on the table.

As a result of bending the knees, the patient's back becomes more convex, allowing it to provide more support during medical procedures.



## FOR-MED Foot Support

The FOR-MED foot support is specially designed to facilitate a comfortable position for the patient during medical procedures, while maintaining proper foot alignment.

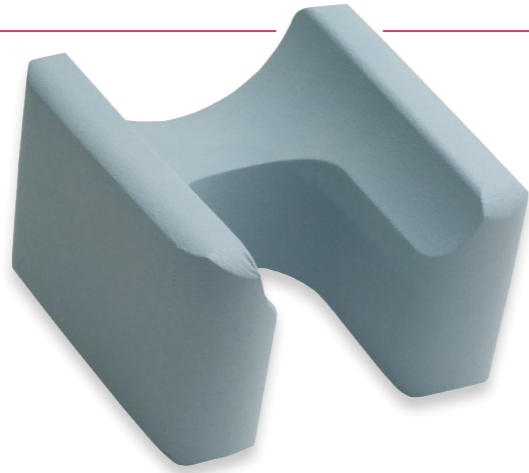
- Promotes patient comfort.
- Ideal for use during lengthy procedures.
- Contributes to better stability and reproducibility, regarding the target area.



## FOR-MED Head Rest Front Foam

The FOR-MED head rest front foam can be used in combination with the breast support in a prone position to reduce stress on the neck.

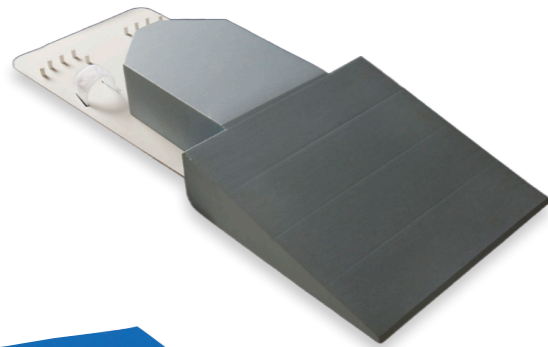
- Head rest can also be used on its own to fix the head.
- Foam is designed for optimal comfort during the medical procedures.



## FOR-MED Hand Support 'Superman Position'

The hand support is specifically designed to make the patient comfortable during medical procedures, while maintaining proper alignment during the 'superman position'.

- Provides good stability and reproducibility when imaging hands in a fixed position.



## Trans Pad

Specially optimised shape with cut out and slope. For assisting with Gynaecological ultrasound scanning.

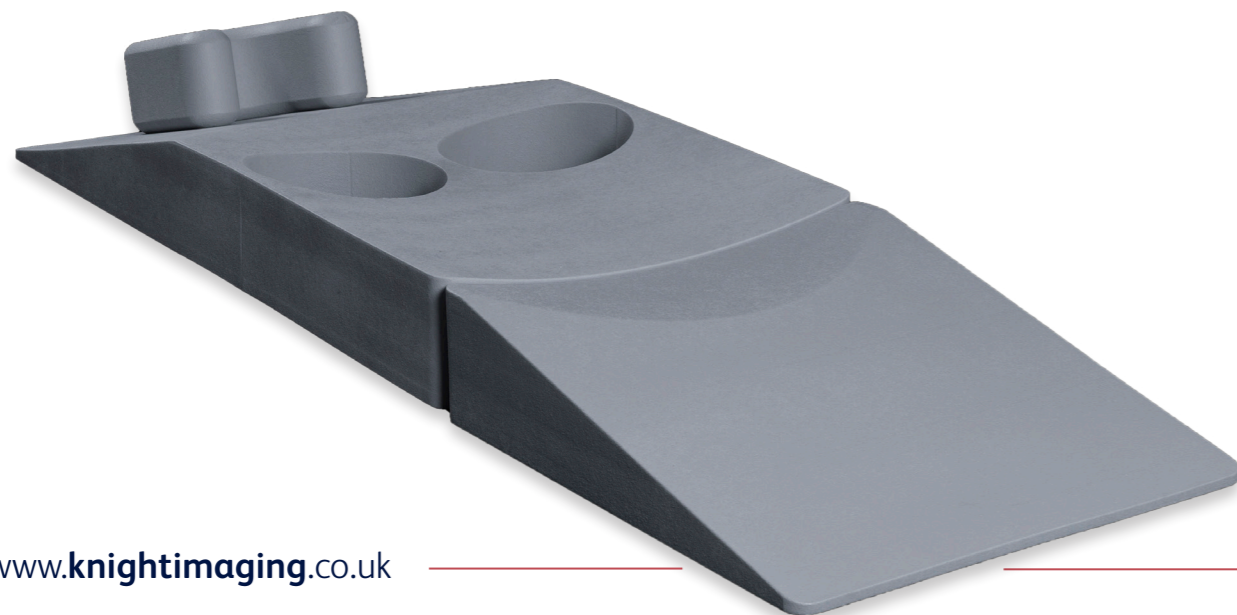
- Fitted with tailored vinyl covering.
- Firm foam specification for good support.
- A possible alternative to the stirrup and knee kits.

Order Code: M7A-IXX-16



## FOR-MED Breast Support

The FOR-MED breast support helps maintain proper alignment during scanning and is ergonomically designed to ensure the patient is comfortable.



## Knee Trough Kit

Fully adjustable with lockable slides, these knee troughs offer raised support for patients legs.

- Supplied with a pair of adjustable extensions.
- Optional narrower upholstered foot section\*

Order Code: M7A-IXX-14



## Gynaecological Stirrups Kit

Manouverable Stirrups Kit complete with lockable slides offer complete flexibility in patient positioning.

Stirrups require a narrower upholstered foot-section fitted.\*

Order Code: M7A-IXX-15

\*If ordered with a couch, the narrow foot section is factory fitted.

Order Code: M7A-IXX-13





# Service and Support

Knight Imaging offers service and support on our range of couches and chairs. We carry out one-off service calls, yearly preventative maintenance visits as well as offering support contracts.

## Planned Preventative Maintenance

Our fully trained engineers service your couches and chairs ensuring that any potential issues are spotted and brought to your attention before they become a problem.

We typically carry out these types of services across entire departments ensuring the best possible lifetime of your couches and chairs. We will always arrange visits in advance to ensure a swift turnaround and to minimise disruption to your ward or department.

A preventative maintenance visit can be arranged whenever you think you need to have your equipment inspected and checked for faults or potential future problems. Just get in touch to discuss your equipment and make a booking.

## Breakdown Response

Our experienced engineers are available to diagnose and repair in times of emergency.



**Knight Imaging Limited**  
Innovation House, 6 Europa View  
Sheffield, S9 1XH, UK  
**E-mail:** [sales@knightimaging.co.uk](mailto:sales@knightimaging.co.uk)  
**Tel:** +44 (0)114 267 0482  
[www.knightimaging.co.uk](http://www.knightimaging.co.uk)

